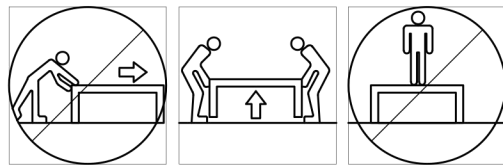
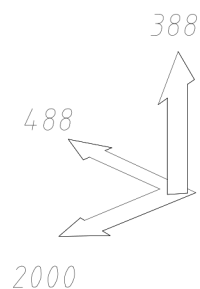
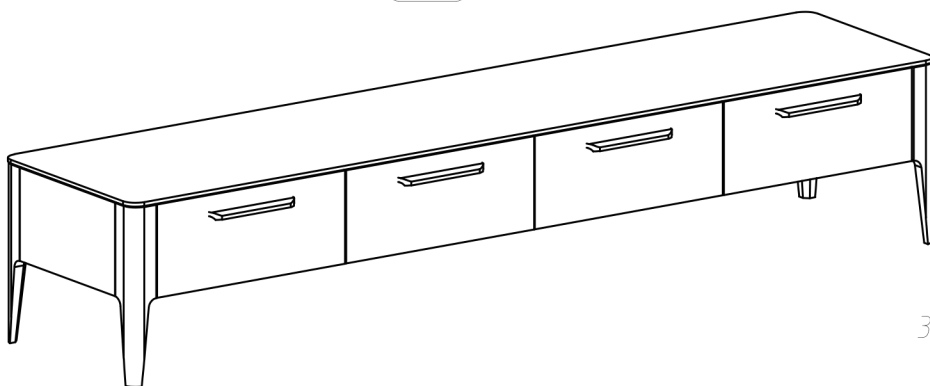


ИНСТРУКЦИЯ ПО СБОРКЕ

АДЕЛАИДА Тумба ТВ4



Max
40 kg



D Montageanleitung

FR Notice de montage

NL Handleiding voor de montage

CZ Montážní návod

HU Szerelési útmutató

TR Montaj talimatları

GB Assembly instructions

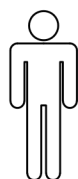
IT Istruzioni di montaggio

PL Instrukcja montażu

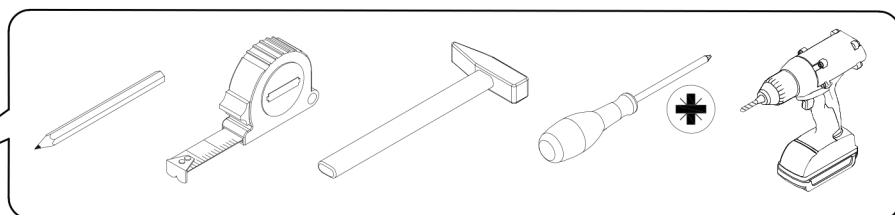
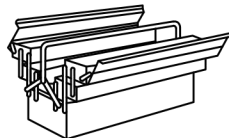
SK Návod na montáž

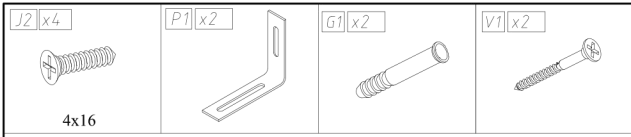
RO Instrucțiuni de montaj

ES Instrucciones de montaje



45 min





4x16

